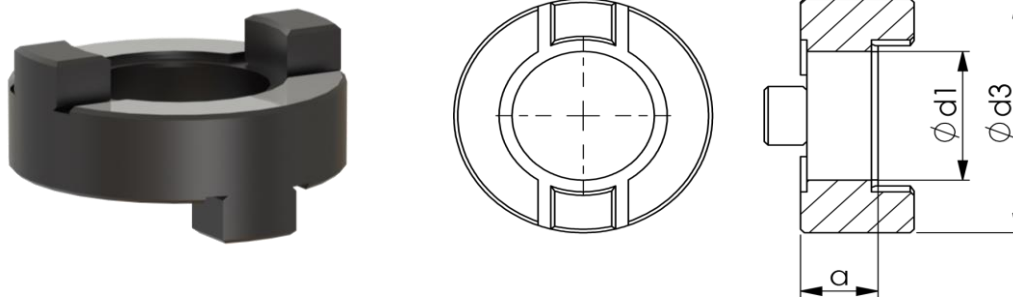


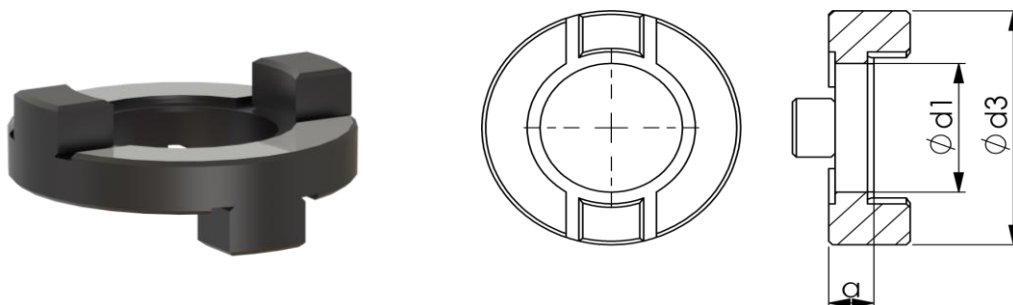
# Mitnehmerringe DIN 6366

## DIN 6366



| d1 | d3 | a  | Art.-Nr. |
|----|----|----|----------|
| 13 | 28 | 10 | MR13-10  |
| 16 | 32 | 10 | MR16-10  |
| 22 | 40 | 12 | MR22-12  |
| 27 | 48 | 12 | MR27-12  |
| 32 | 58 | 14 | MR32-14  |
| 40 | 70 | 14 | MR40-14  |

## ähnlich DIN 6366, schmale Ausführung



| d1 | d3 | a | Art.-Nr. |
|----|----|---|----------|
| 16 | 32 | 6 | MR16-6   |
| 22 | 40 | 7 | MR22-7   |
| 27 | 48 | 6 | MR27-6   |
| 32 | 58 | 7 | MR32-7   |
| 40 | 70 | 6 | MR40-6   |
| 50 | 90 | 6 | MR50-6   |