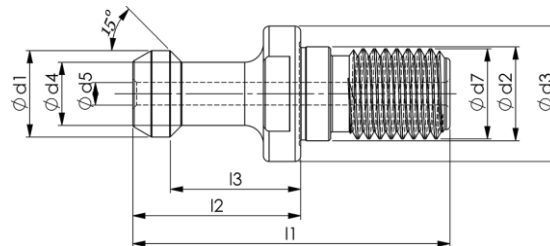


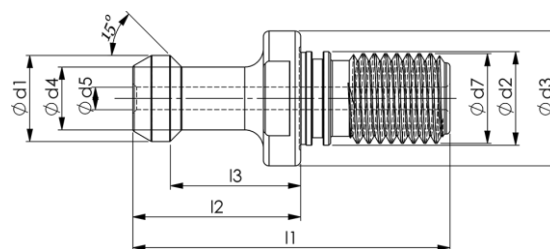
## Anzugsbolzen JIS

### mit Durchgangsbohrung



Artikel-Nr.	SK	$\alpha$	d1	d2	d3	d4	d5	d7	l1	l2	l3
AB-JIS3001	30	15°	12	12,50	16,50	8	-	M12	43	23,4	18,4
AB-JIS3002	30	15°	12	12,50	16,50	8	4,0	M12	43	23,4	18,4
AB-JIS4000	40	15°	19	17,00	23,00	14	7,0	M16	54	29,0	23,0

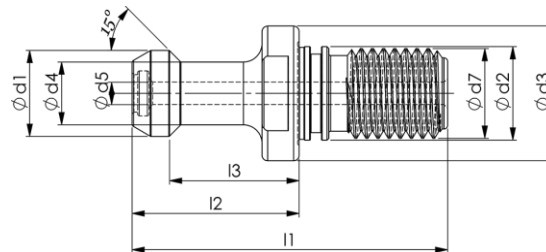
### mit Durchgangsbohrung und O-Ring



Artikel-Nr.	SK	$\alpha$	d1	d2	d3	d4	d5	d7	l1	l2	l3
AB-JIS4001	40	15°	19	17	23	14	-	M16	54	29	23
AB-JIS4002	40	15°	19	17	23	14	7,0	M16	54	29	23
AB-JIS4004	40	15°	19	17	23	14	4,0	M16	54	29	23

## Anzugsbolzen JIS

mit Durchgangsbohrung, O-Ring und Innendichtung



Artikel-Nr.	SK	$\alpha$	d1	d2	d3	d4	d5	d7	l1	l2	l3
AB-JIS4009	40	15°	19	17	23	14	7,0	M16	54	29	23
AB-JIS4010	40	15°	19	17	23	14	4,0	M16	54	29	23