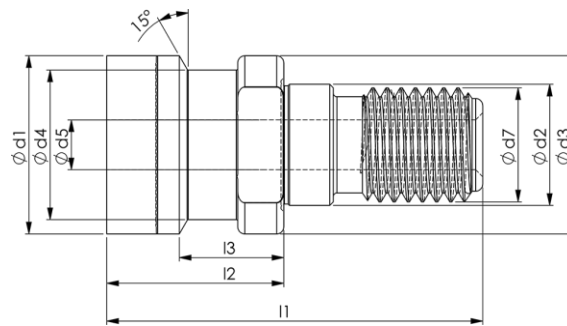


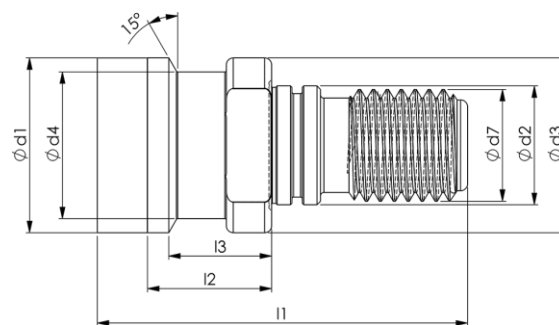
Anzugsbolzen DIN 2080 Ott-Ringnut

DIN 2080 Ott-Ringnut mit Durchgangsbohrung



Artikel-Nr.	SK	α	d1	d2	d3	d4	d5	d7	l1	l2	l3
AB-RN40	40	15°	25,05	17	25	21,1	7,0	M16	53	25	13,6
AB-RN50	50	15°	39,60	25	32	-	11,5	M24	65	25	13,6

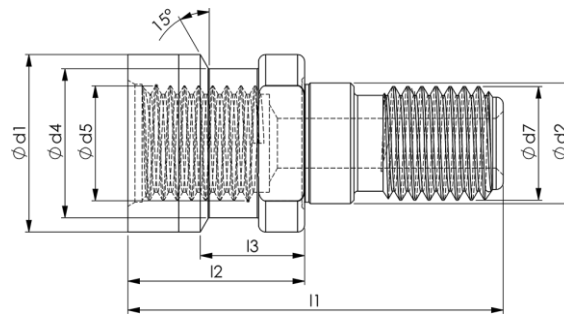
ähnlich DIN 2080 Ott-Ringnut mit O-Ring



Artikel-Nr.	SK	α	d1	d2	d3	d4	d7	l1	l2	l3
AB-RN40B	40	15°	25,05	17	25	21,1	M16	53	25	13,6

Anzugsbolzen DIN 2080 Ott-Ringnut

DIN 2080 Ott-Ringnut mit Innengewinde



Artikel-Nr.	SK	α	d1	d2	d3	d4	d5	d7	l1	l2	l3
AB-RN30I	30	15°	17,00	13	17	14,5	M12x12	M12	38	18,1	12,1
AB-RN40I	40	15°	25,05	17	25	21,1	M16x19	M16	53	25,0	13,6
AB-RN50I	50	15°	39,60	25	32	-	M24x18	M24	65	25,0	13,6